

---

# **Building Bridges for a Bright Future: Elite Sport in Hong Kong**

**Chung Pak-Kwong**

**Head and Professor**

**Department of Physical Education**



**香港浸會大學**

**HONG KONG BAPTIST UNIVERSITY**

Hong Kong: A land mass of 1,104 km<sup>2</sup> (426 sq mile) and a population of 7 million people, is one of the most densely populated areas in the world

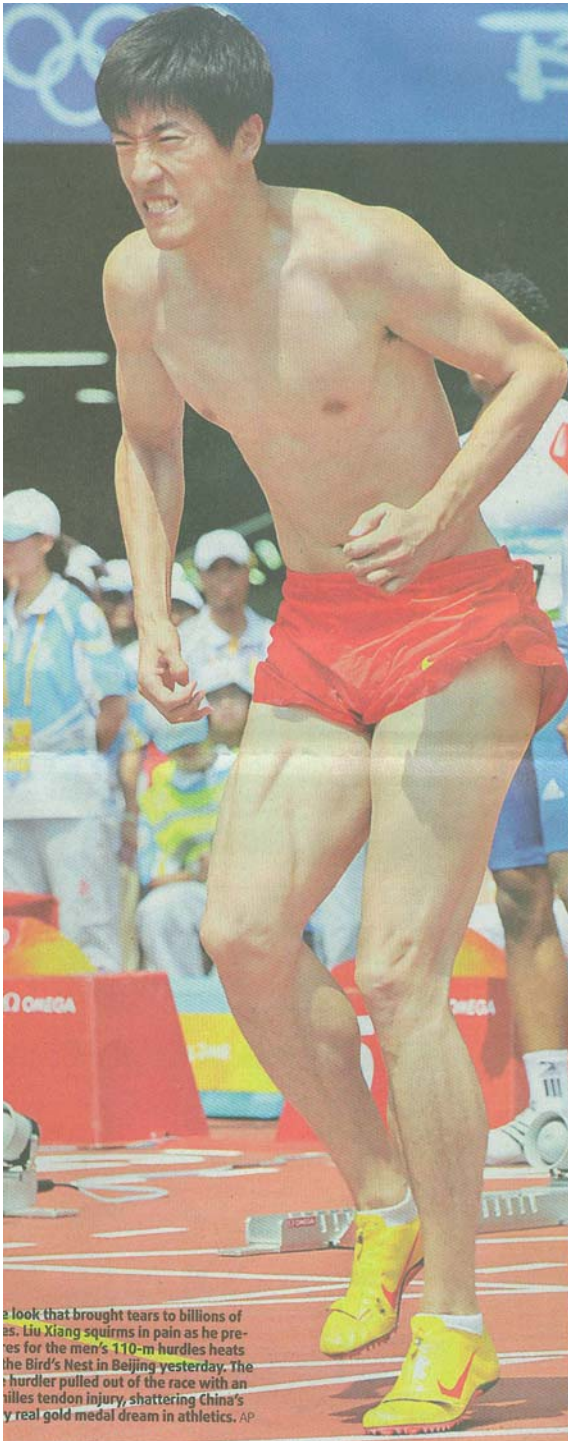




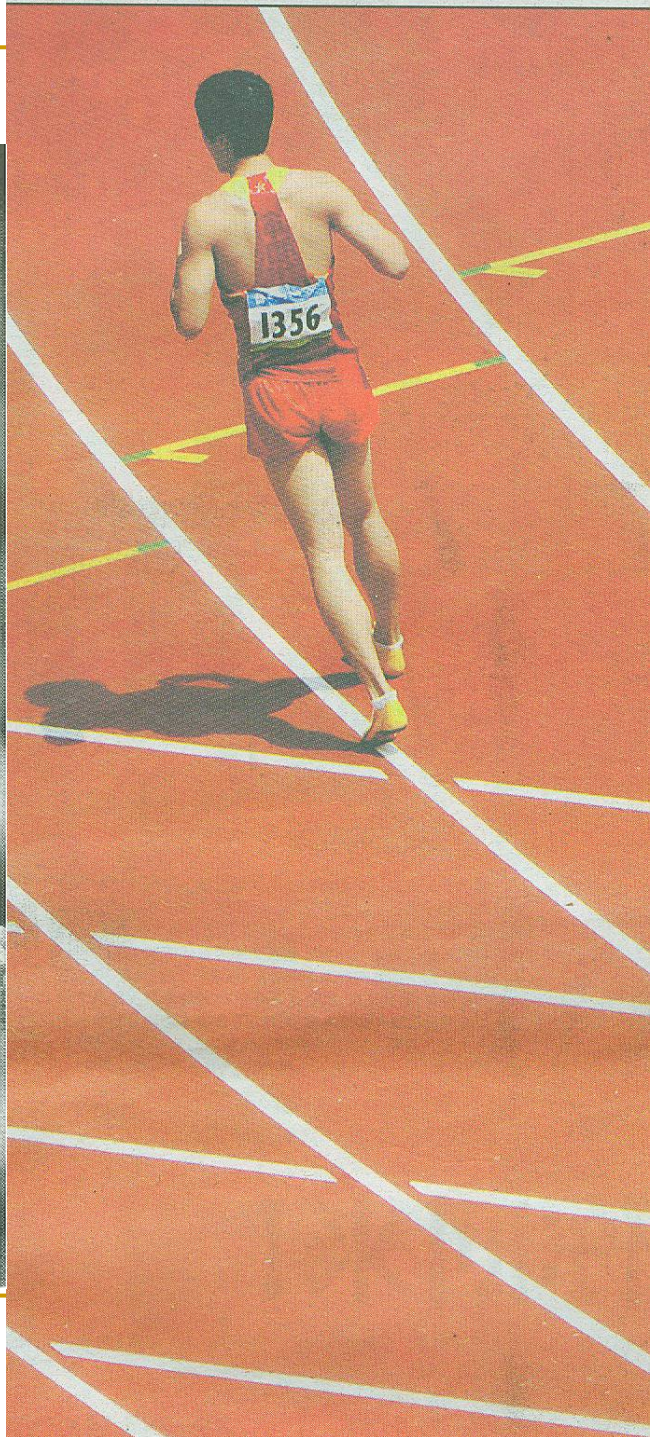
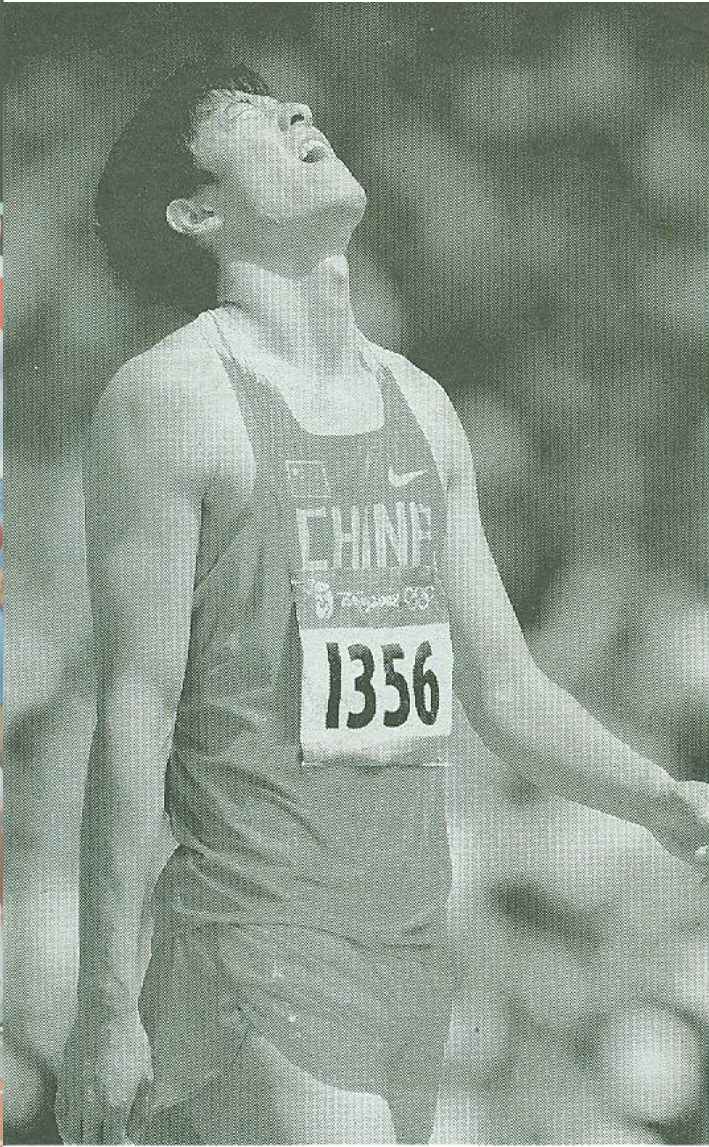








The look that brought tears to billions of eyes. Liu Xiang squirms in pain as he prepares for the men's 110-m hurdles heats at the Bird's Nest in Beijing yesterday. The hurdler pulled out of the race with an Achilles tendon injury, shattering China's only real gold medal dream in athletics. AP

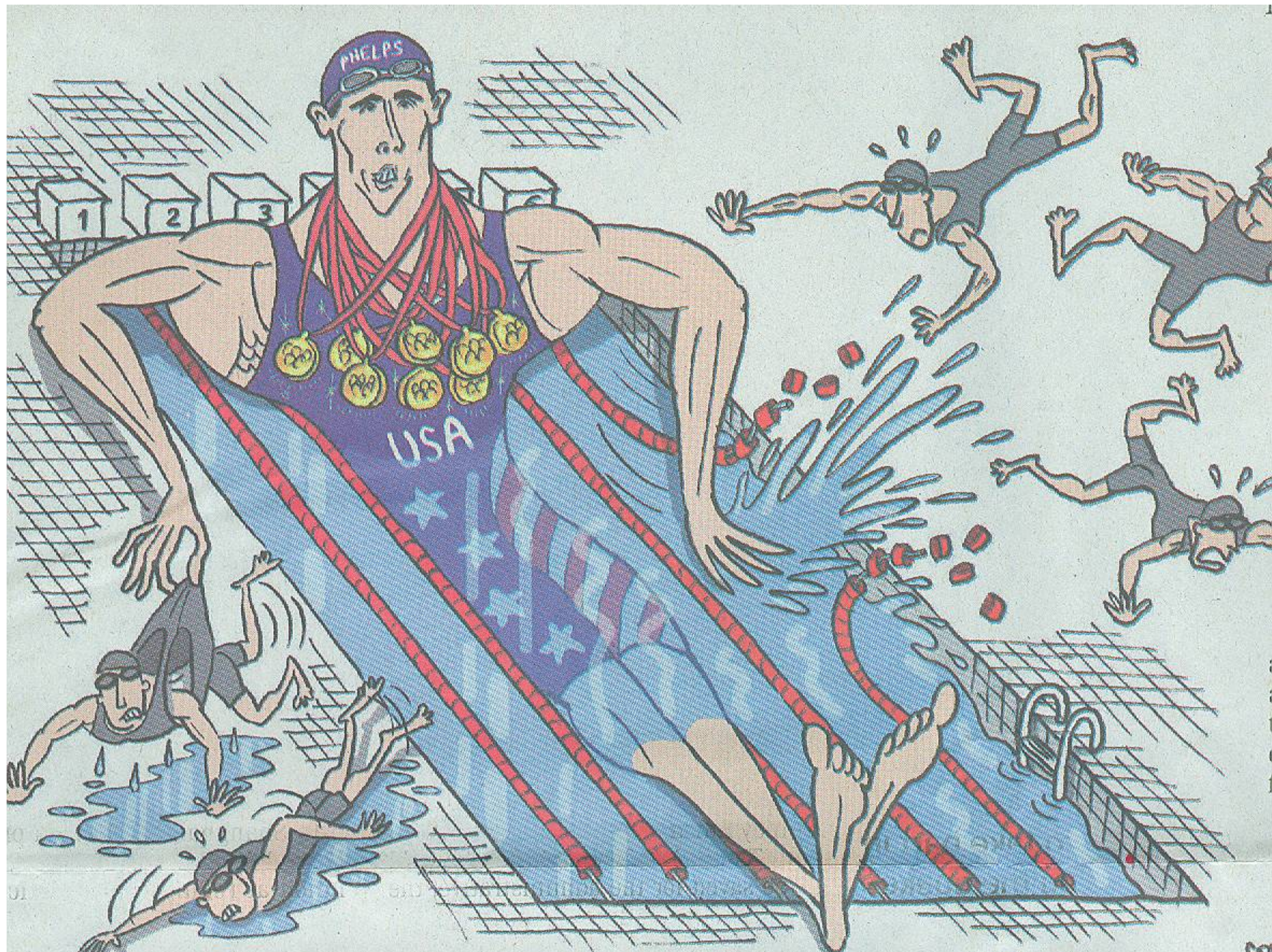




中国新闻网 2004-8-21 菲普斯 毛建军 摄  
当地时间八月二十三日晚，美国神童菲尔普斯在雅典奥运会一百米蝶泳比赛中获得金牌。









---

**Windsurfer Lee Lai-shan  
grabbed a gold medal at  
the Atlanta Olympics 1996**



**Table tennis duo, Li Ching & Ko Lai-chak clinched a silver medal at the Athens Olympics 2004**

---

# Sports Delivery System in Hong Kong

**Sports Federation &  
Olympic Committee  
of Hong Kong, China**

**Home Affairs Bureau  
Leisure & Cultural  
Services Dept.**

**National Sport  
Associations**

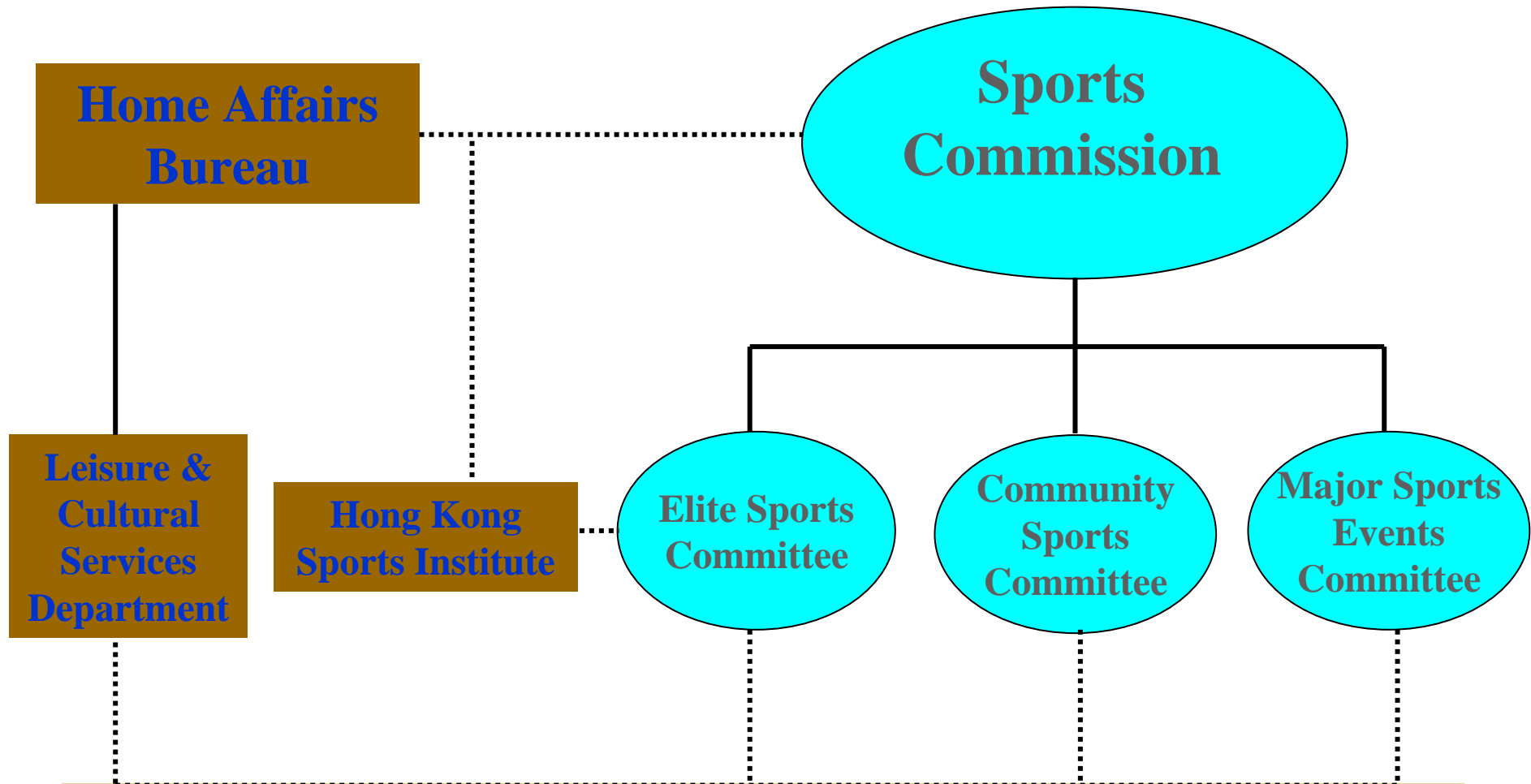
**Hong Kong  
Sports Institute**

**Community  
Sports Clubs**

**Education  
Sectors**

---

# Sports Structure in Hong Kong





---

## Selection of Elite Sports

- **Based on international competition results (Elite Vote Scoring Table)**
- **Support Cycle: 4 years**
- **Review Cycle: Every 2 years**
- **Currently: 14-15 Elite Sports**

---

# Selection of Elite Sports

## Scoring Table

- **5-point: OG/AG/WC**
- **4-point: AC/NG**
- **3-point: EAG/RC**

**2 Senior + 2 Junior best results**



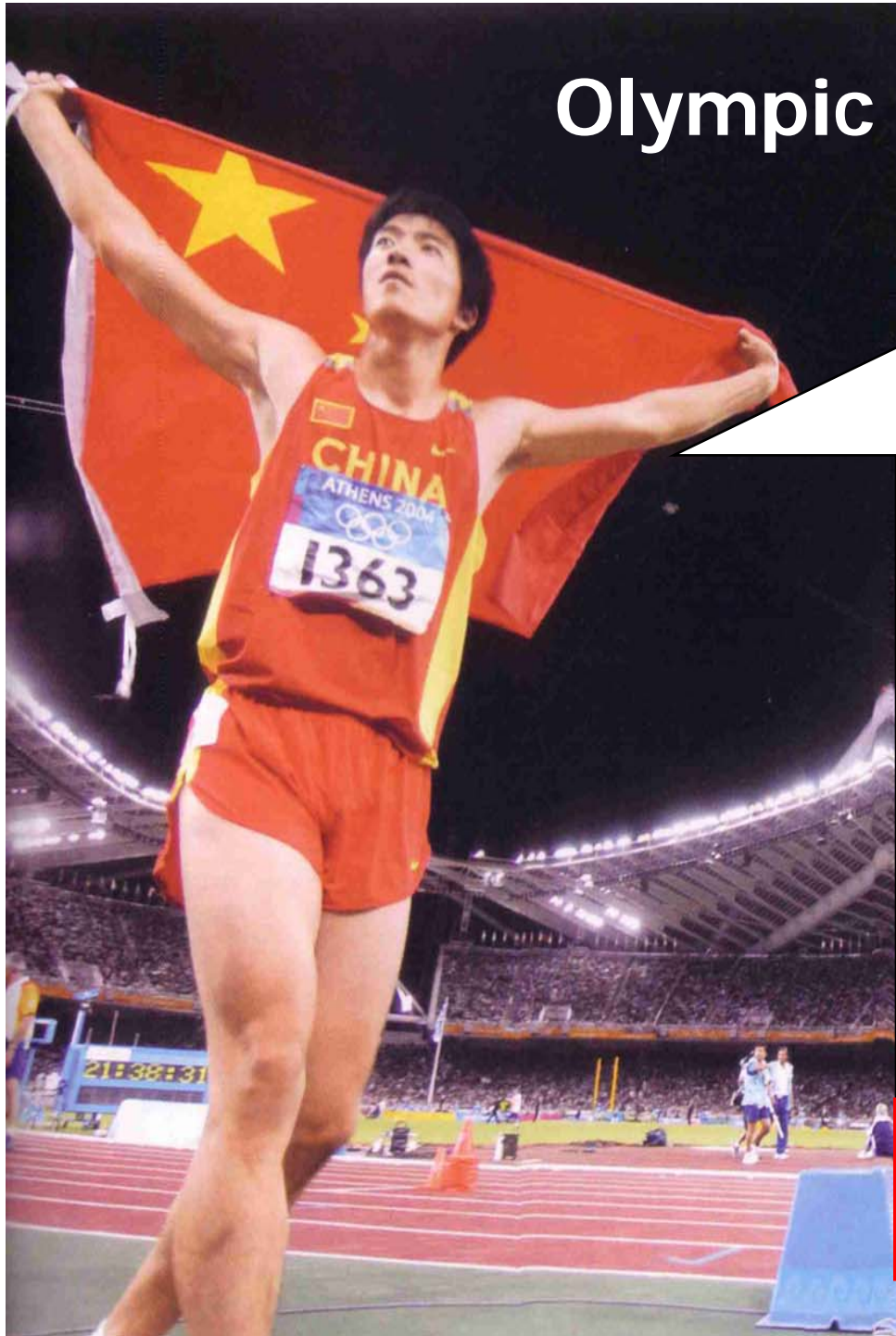
---

## Athlete Grants

### Senior Athletes

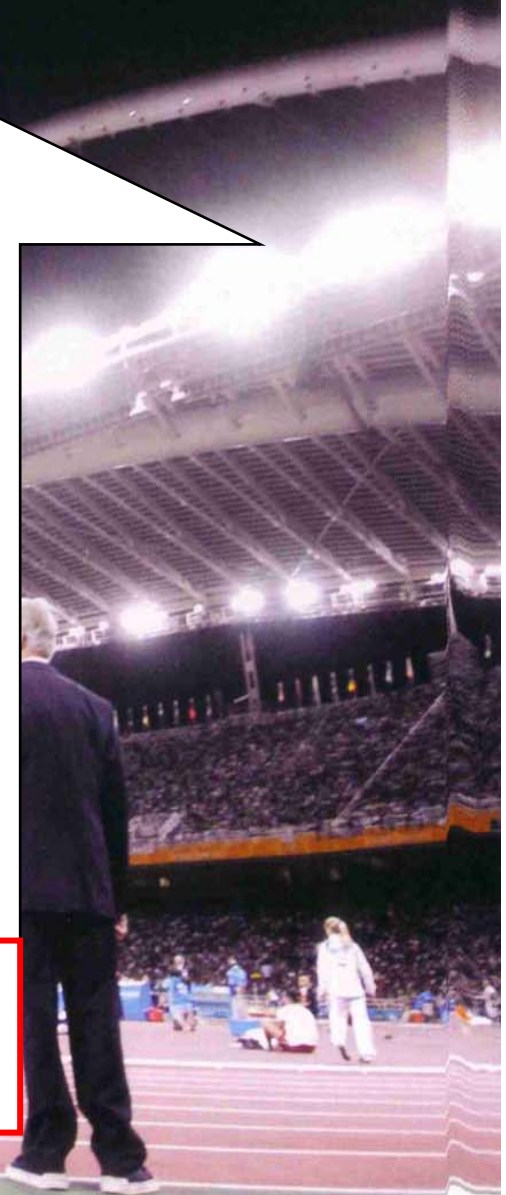
- **5-point: OG/AG/WC (Elite A+: US\$3800 - \$4460 per month) (US\$53,520 per year)**
- **4-point: AC/NG (Elite A: US\$3025 - \$3564 per month)**
- **3-point: EAG/RC (Elite B+: US\$2270 - \$2680 per month)**

# Olympic Champion



**Talented Athlete**  
+  
**Top Coach**  
+  
**Scientific Support**  
+  
**Family Support**  
+  
**Commitment**  
+  
**Hard Work**

**8 - 15 Years**



---

## Challenges to Hong Kong Elite Sport

- **Athlete Talent Pool**
- **Career and Prospect**
- **Sport culture**
- **Sport Policy**
- **Leadership**



***Thank you!***